

June 2021

### Student Accommodation

You have two choices when deciding accommodation in Ibaraki during your stay:

1. Private – finding your own place; or
2. Using Ritsumeikan University accommodation services.

Please make sure that you secure a place before coming to Japan.

### Private Accommodation

You can find an apartment by contacting real estate agents in Japan directly. Please make sure you pre-book hotel or guest house accommodation in Ibaraki before arriving so you have somewhere to stay while you look.

Please note: When signing a contract for a lease agreement, you might be required to pay lump sums of money called “*SHIKIKIN*” and “*REIKIN*”.

**SHIKIKIN**: deposit; it is required as security money for possible damage.

**REIKIN**: ‘key money’/bond; a non-refundable fee to be paid to the landlord when the contract is signed.

Tenants are generally required to pay the equivalent of about 2 to 6 times the monthly rent for *SHIKIKIN* and *REIKIN*.

- ◆ Most private accommodation is not furnished.
- ◆ The number of English-speaking agents in Ibaraki might be limited.

### Ritsumeikan University Accommodation (International Dormitory)

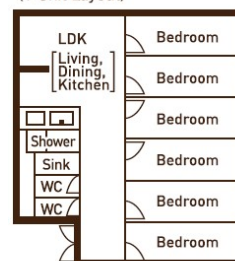
International students can also choose to live in the OIC International House (OIC I-House), which opened in spring 2018. International students and Japanese students live together in 6-person units, which include individual rooms for each person as well as a shared living space. Fellow students called Resident Mentors (RMs) also live in the units and provide support for everyday life, in addition to planning events for dormitory residents.

#### **OIC International House:**

- ◆ Location: 1-9-9 Kamichujo, Ibaraki (approx. 10-minute bike ride or 18-minute walk from campus)
- ◆ Monthly fees: 59,200 yen (including rent, bedding rental, utilities, and internet)  
 \*Additional entrance fee (10,000 yen), security deposit (50,000 yen), and 2 months’ worth of fees must be prepaid upon moving in
- ◆ 5 floors (including one for women only), 28 units of 6 people per unit
- ◆ Individual room includes bed, desk, chair, wardrobe, air conditioning unit
- ◆ Shared space includes dining room/kitchen/living space, shower, sink, 2 toilets
- ◆ Residence is for 1 year. It is also possible to extend your stay at OIC I-House.
- ◆ Please see the website below for more information.

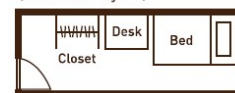
<http://en.ritsumei.ac.jp/lifecareer/dorm/oic/>

(1 Unit Layout)



Sample  
Layout

(Bedroom Layout)



The University will provide further information about the application process to enrollees.

### For inquiries:

International Center at Osaka Ibaraki Campus Ritsumeikan University

E-mail: oic-dorm@st.ritsumei.ac.jp