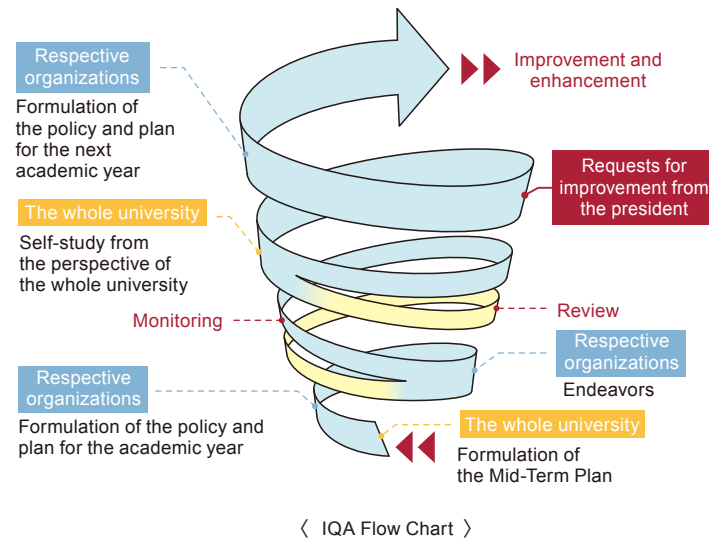


## | Towards Ensuring Improvement and Enhancement |

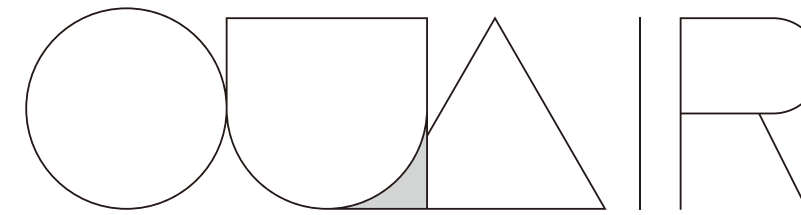


### Monitoring and Review, and Requests for improvement from the president

It was decided in academic year 2017 that the self-study report made by the Self-Study Committee will be sent to the president, who then identifies the urgent matters that need to be improved and makes requests for improvement. After improvement was achieved, the committee will report the results to the president. In addition to this flow, from the academic year of 2019, we started to take a monitoring and review approach to facilitate the efficient and effective IQA. By doing so, we ensure the results from the self-study lead to improvement and enhancement of our university.



Aiming at further improvement/  
enhancement of education and research



大学評価・IR室

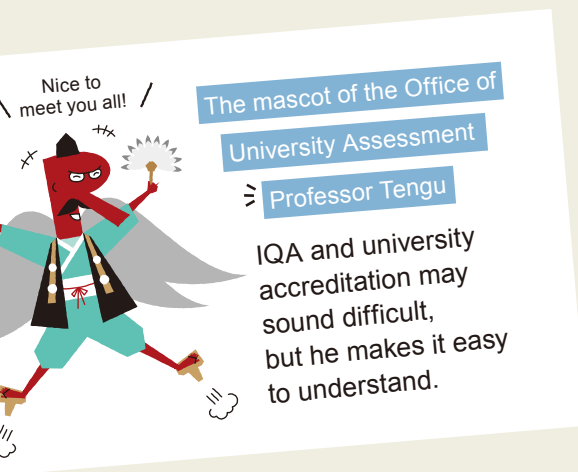
Office of University Assessment  
and Institutional Research

### External evaluations of colleges and graduate schools that is unheard of in other universities

External evaluation is very important as an opportunity to receive objective evaluation. Ritsumeikan University has numerous colleges and graduate schools in a wide range of academic fields, and conducts not only external evaluation of the whole university, but also external evaluation for the respective special fields in all colleges and graduate schools. External evaluators selected from each academic and society field evaluate the education and research activities of each college and graduate school, and the evaluations are utilized for improvements and enhancements. No other university carries out external evaluations of their respective colleges and graduate schools in such a large-scale and systematic way.

The Office of University Assessment was established in March 2005 with the aim of working towards the establishment and promotion of university assessment activities in Ritsumeikan University, and contributing to new reform and development of the university. Under the mission of the Ritsumeikan Charter, namely enhancing the quality of education and research, based on Ritsumeikan's history and features, to international standards, the Office of University Assessment and Institutional Research is striving daily to achieve these goals.

The organization responsible for promoting internal quality assurance (IQA) in the university as a whole, is the Self-Study Committee. The Office of University Assessment and Institutional Research functions as the Self-Study Committee's secretariat.



Endeavors have been carried out based on the Mid-Term Plan (seven-year plan) concerning university assessment activities that were formulated in AY2011 towards the AY2018 Third University Accreditation\*.

Based on the Ritsumeikan Charter, the newly formulated R2030 Plan and the university accreditation results etc., we will formulate and promote the Mid-Term Plan concerning the university's assessment activities for the Fourth University Accreditation.

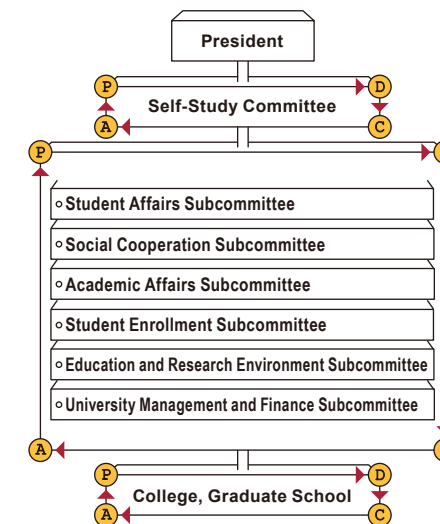
Through these endeavors we aim to create a "culture of quality" in Ritsumeikan University.

\* University accreditation conducted by the Japan University Accreditation Association

### Conceptual Image of the Promotion of IQA

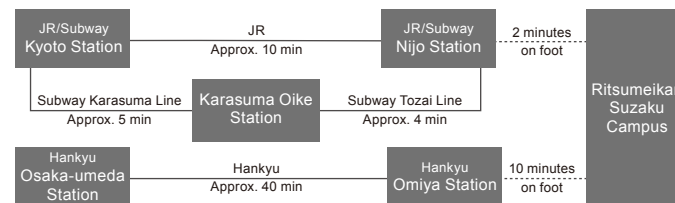
Subcommittees for respective fields are established under the Self-Study Committee. The subcommittees are responsible for encouraging active IQA within each relevant organization, and performing reviews and assessments of relevant fields from the perspective of the whole university.

In particular the Academic Affairs Subcommittee compiles data concerning diverse educational practices and the results of self-studies from 16 colleges and 22 graduate schools (as of AY2020), and provides the relevant information that serves as the basis for reviews and assessments in the field of academic affairs.



Office of University Assessment and Institutional Research  
(Secretariat: Office of Planning and Operations Management)

Ritsumeikan Suzaku Campus  
Nishinokyo-Suzaku-cho 1, Nakagyo-ku, Kyoto 604-8520  
Tel: 075-813-8251  
E-mail: hyoukas@st.ritsume.ac.jp  
URL: <http://en.ritsume.ac.jp/assessment/>



Detailed information regarding the above matters, self-study reports, external evaluation results of respective colleges and graduate schools etc., can be viewed on the "Office of University Assessment and Institutional Research" website.

### Purpose of the Self-Study Committee

\* From Ritsumeikan University's Self-Study Committee Regulations

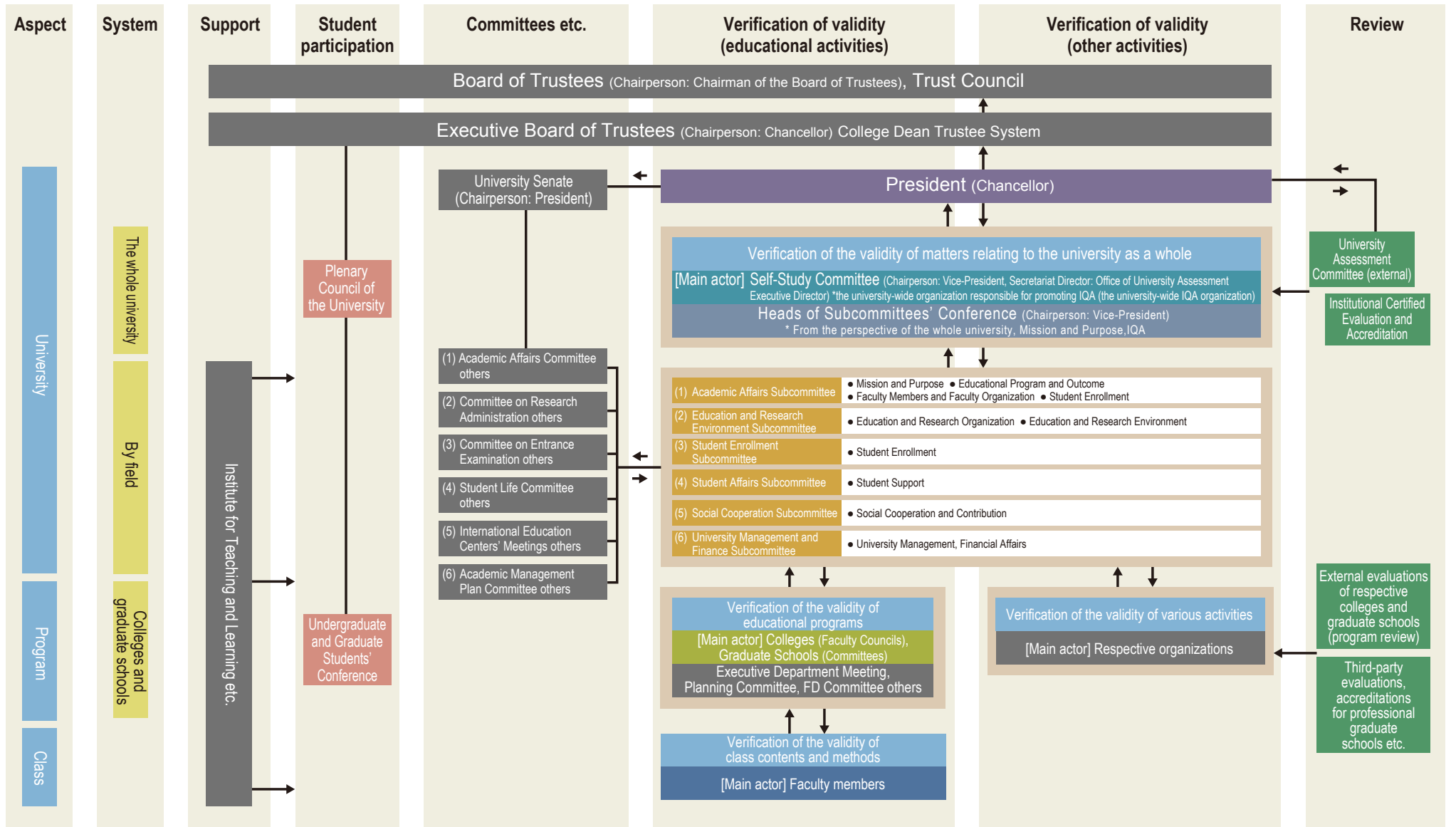
1. Grasp the situations surrounding education and research activities and strive towards improving education and research, in order to improve the standard of education and research in the university, and accomplish the purpose and social missions of the university (hereinafter referred to as "self-study").
2. Conduct self-study and, based on the results thereof, promote continuous improvement of education, research, and other activities, in order to ensure the quality of the university's education and research (hereinafter referred to as "internal quality assurance").

### Organization of the Self-Study Committee

Chairperson:  
The vice-president in charge of Academic Affairs  
Committee members:  
College deans, graduate school deans, the managers of the following divisions; Division of Academic Affairs, Division of Admissions, Division of Research, Division of International Affairs, Division of Student Affairs, Division of Career Services, Division of General Affairs, Division of Financial Affairs, the library director and other members appointed by the chairperson  
Secretariat Director:  
Office of University Assessment and Institutional Research  
Executive Director

## Diagram showing the relationships between IQA organizations

Due to the necessity for self-study from the perspective of the whole university in IQA, a conference consisting of the heads of respective subcommittees has been established under the Self-Study Committee. Respective subcommittees and organizational meetings are cooperating towards furthering these efforts. Regarding the appropriateness and validity of the IQA system itself, verification is carried out based on feedback obtained through holding the University Assessment Committee which is composed of external evaluators.



## Systematic diagram of IQA system focused on education

IQA in the field of academic affairs has the following organizational structure: President – Self-Study Committee – Academic Affairs Subcommittee – colleges/graduate schools – faculty members. A structure whereby each college and graduate school works autonomously towards managing academic affairs and evaluations within a broad and university-wide framework, including the Ritsumeikan Charter, Mid-Term Plan, educational guidelines etc., is the system that suits Ritsumeikan University, which has numerous colleges, graduate schools etc.

