



# Career Guidance for International Students



Ritsumeikan University  
**Career Center**  
September, 2022

**Beyond Borders**

## Request from Career Center

In order to provide appropriate career supports, please tell us your current career plan after graduation.



**Compulsory**

This is compulsory,  
regardless of your career  
plan due to Employment  
Security Act.

<https://bit.ly/3NIZnwf>

The survey takes you only a couple of minutes!

**Deadline: Sep 30th, 2022, 11:59PM**

## What is your career plan after graduation?

Work for a Japanese company in Japan.

Work for a foreign capitalized company in Japan.

Work for a company in another country.

Go to graduate school in Japan.

Go to graduate school in another country.

**Beyond Borders**

3

**1. About Career Center**

**2. Job Hunting in Japan**

**3. Job Hunting report from International Alumni**

**Beyond Borders**

4

# 1. About Career Center

We provide career support especially for international students **seeking for employment in Japan.**

Staff in charge of international students:

**Kinugasa**

Ms. Yano  
Ms. Koshimae

**BKC**

Ms. Ishimoto  
Ms. Kikuchi  
Ms. Kohda

**OIC**

Ms. Kin  
Ms. Ogawa  
Ms. Hagihara

Language: English and Japanese



**Beyond Borders**

5

# 1. About Career Center

**Come and visit us for:**

They were held online in 2021.  
Even if you are not in Japan yet,  
you can use our service!

- Individual career counseling (available in English)
- Guidance for how to write a resume in Japanese
- Mock interviews
- On-campus career job fairs for international students
- Providing career information
- Guidance for how to find internships, etc.



**Beyond Borders**

The first year students are also welcome to join!

6

# 1. About Career Center

-To Receive the latest information from us-  
**Follow us on LINE and  
Subscribe to our newsletter!**

**LINE**



**Newsletters for  
International Students**



**Beyond Borders**

7

# 1. About Career Center

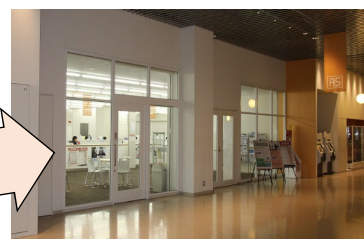
**We are here to help you!**



**Operation Hours:**

**OIC**

**AS Office**



■ Monday, Tuesday, Thursday, Friday 9:30~17:00

**Be** ■ Wednesday 12:30~17:00

※Closed between 11:30 and 12:30

8

# Student Life and Career Planning



## Build your experience in Japan

Your Path  
afterwards

Grad Schools

Work

Others

- ◆ Grad Schools Overseas
- ◆ Grad Schools in Japan

- ◆ Work Overseas
- ◆ Work in Japan

Start up a business etc.  
...Various paths

## 2. Job Hunting in Japan

The Number of Ritsumeikan international students employed by Japanese companies:

(International Students, class of 2021)



Students employed in Japan: approx. **170**

Students employed in public-listed companies: approx. **50**



What they have in common

1. Business-Level Japanese Proficiency
2. Time they had spend together with Japanese

## 2. Job Hunting in Japan

### Business-Level Japanese

is required by the end of 3<sup>rd</sup> year (Undergraduates)  
or 1<sup>st</sup> year (Graduates) if you want to work in Japan.

**You should start learning Business  
Japanese from today.**



▼ Sources to help you improve Japanese skills

JF Japanese e-Learning “*Minato*” <https://minato-jf.jp>  
Japanese Language Learning Support App “*TOBIRA*”  
App Store: <https://apple.co/32s7tSC>  
Google Play: <https://bit.ly/3Hcx3do>

**Beyond Borders**

11

## 2. Job Hunting in Japan

### What Business-level Japanese is

(Reading) Able to read business Japanese correctly

(Writing) Able to write Japanese without grammatical mistakes

(Listening) Able to understand spoken Japanese at natural speed

(Speaking) Able to speak Japanese at the same speed as native speakers



### Required native Japanese level.

If you are...

> able to understand when it's not too fast.

> still at a conversation level.

⇒ You should improve your Japanese.

**Beyond Borders**

12

## 2. Job Hunting in Japan

Let's make Japanese friends and join Japanese community!

### It enables you to...

- improve your Japanese skill!
- understand Japanese culture furthermore!
- learn about Japanese behavioral traits!
- get used to communication between native speakers!
- build a network!

Beyond Borders

13

## 2. Job Hunting in Japan

You need to be **well prepared** for job hunting in Japan!

Come and visit the Career Center!



### Understand job-hunting process and schedule.

- ◆ Most Japanese companies start recruiting activities at the same time.
- ◆ Career Center provides career guidance for **3rd year (Undergraduates) and 1st year (Graduates)** students.
- ◆ International students are required to have a job offer **before graduation.**

Beyond Borders

14

## 2. Job Hunting in Japan

	Japan	China	Korea
<b>When to start job hunting</b>	<u>Undergraduate -&gt;</u> June of 3 <sup>rd</sup> -year <u>Graduate -&gt;</u> June of 1 <sup>st</sup> -year	About 9 months before graduation	About 3 months before graduation
<b>When to receive job offers (in general)</b>	About 10 months before graduation	About 9 months before graduation	About 3 months before graduation
<b>When to start working</b>	April (After your graduation)	Depends on company	
<b>Occupation</b>	Generalist (総合職 – Sogo shoku)	Recruitment by occupation. Specialist	
<b>What companies look for</b>	Personality, Growth potential, University experience	Skills, Knowledge, Internship experiences	
<b>Term of Internship</b>	A few days – a few weeks (Generally less than a month)	Long term(3-6 months)	

15

## Job hunting support program for international students seriously willing to work in Japan

Ritsumeikan University is a member of **SUCCESS**, the Consortium for Supporting Employment of Foreign Students

### 【Events examples】

Long-term internship

Business Japanese language courses

Courses related to job hunting

▶ Attend the events that interest you!



**\*This program is conducted in Japanese.**

**Beyond Borders**

16



## ●Other events for International Students

- 'Entry Sheet (Resume) Writing Workshop' Japanese
- 'Work in China' Chinese
- 'Work in Korea' Korean
- 'Work Beyond Borders' Japanese ENGLISH

\*The schedule may change.

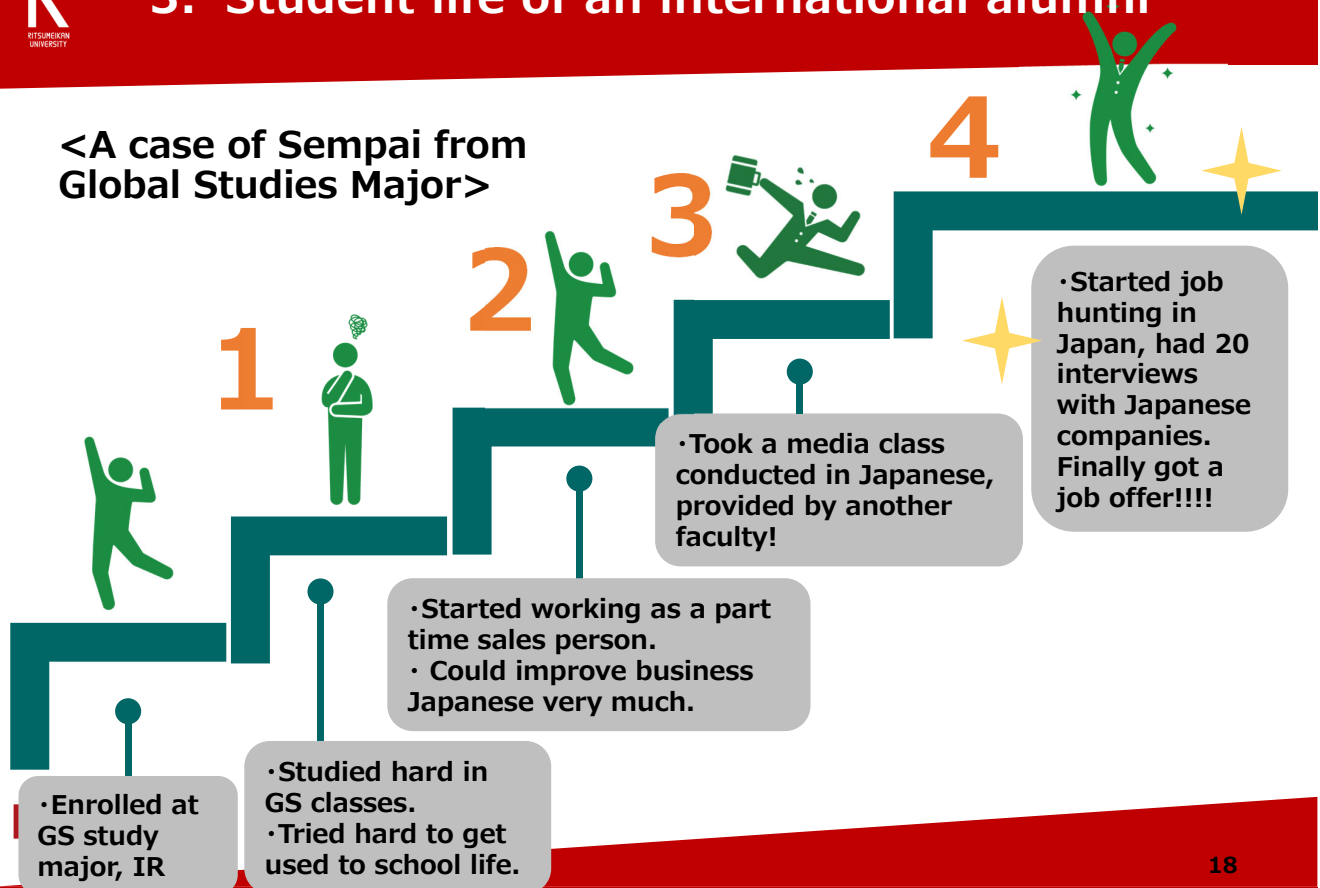
**We will update information on the website.**

**Beyond Borders**

17

## 3. Student life of an international alumni

<A case of Sempai from  
Global Studies Major>



18

## the Career Center's English website

Check out the information for job hunting tips and more!



<http://www.ritsumei.ac.jp/career/en>

**Beyond Borders**

19

## Career Center Website (JPN)

<http://www.ritsumei.ac.jp/career/>

The latest information about career events held by RU Career Center.



### 自分に合う就活を探す



日本での就職、母国での就職を目指す外国  
人留学生向けサイト



理系学校推薦に関する情報や薬学部薬学科  
の学生向けの情報サイト



障害のある学生向けの情報や性の多様性を  
踏まえた情報サイト

**We have a website specialized for international students**

**Beyond Borders**

20

## Career Center Website for the 1<sup>st</sup>& 2<sup>nd</sup> year Undergraduates (JPN)

<https://secure.ritsumeai.ac.jp/students/career/career-design/>

The latest information about career events for the 1<sup>st</sup> and 2<sup>nd</sup> year Undergraduate students.



## Japan Student Services Organization (JASSO)

[https://www.jasso.go.jp/ryugaku/study\\_j/job/index.html](https://www.jasso.go.jp/ryugaku/study_j/job/index.html)

You can download 'Job Hunting Guide for International Students' (Language: Japanese, English, Simplified Chinese, Traditional Chinese, Korean)



## Career Support Network for International Students in Japan

<https://ajinzai-sc.jp/>

Provides about 40 informative movies about Job hunting in Japan.



## International Foreign Students Association (IFSA)

<http://ifsa.jp/index.php?FrontPage>

Provides Job hunting tips and Job listings for International students.



## Kyoto Prefectural International Center

<https://www.kpic.or.jp/>

You can consult regarding your daily life in Japan, Job hunting, etc.

\*Students in BKC and OIC can also visit the center.



## KyoTomorrow Academy

<https://www.studykyoto.jp/kyotomorrowacademy/>

Provides event information for International students held in Kyoto.  
\*Students in BKC and OIC can also attend events.



## STUDY KYOTO

<https://www.studykyoto.jp/ja/>

Provides event information for International students held in Kyoto.  
\*Students in BKC and OIC can also attend events.



## Kyoto Job Park

<http://www.pref.kyoto.jp/jobpark/ryuugaku.html>

Job posting information for International students.  
Consultation about job hunting.

\*Students in BKC and OIC can also visit the center.



## Osaka Employment Service Center for Foreigners

<https://jsite.mhlw.go.jp/osaka-foreigner/home/ryugakusei.html>

Public Employment Security Office (called 'Hello Work') running  
by the Ministry of Health, Labor and Welfare.

\*Students in KIC and BKC can also visit the center.



## Mynavi Global Career

<https://global.mynavi.jp/>

Job Information Website for Bilingual Job-seekers.

